

PRICE DASHBOARD

No 124 – September 2022 edition

This price dashboard provides a monthly summary of price data for the most representative agricultural inputs, agricultural products and consumer food prices, at EU and world level. Although not all the products are comparable at both EU and world level, this document is intended to give an indication on the most recent price developments.

Date of publication: 26.10.2022

AGRICULTURAL COMMODITY PRICES – September 2022

Agricultural Commodity	EUROPEAN UNION 27			WORLD			
	Monthly average	Annual change	Monthly change	Monthly average		Annual change	Monthly change
CEREALS ⁽¹⁾	EUR/T	%	%	USD/T	EUR/T	%	%
Soft wheat	331	32.3%	-1.2%	344 ⁽²⁾	348	27.7%	9.2%
Durum wheat	441	-2.9%	-7.8%	419 ⁽³⁾	423	24.4%	9.4%
Maize	335	16.9%	-4.9%	313	316	33.2%	6.4%
Barley	297	30.0%	0.8%	275	278	4.8%	-5.8%
MEAT							
Beef	4,977	24.4%	-0.2%	5,649	5,704	-0.2%	-1.0%
Pork	2,105	53.4%	4.6%	2,105 ⁽⁶⁾	2,125 ⁽⁶⁾	15.3%	-22.1%
Poultry	2,667	35.6%	0.8%	2,763	2,789	18.5%	-6.4%
DAIRY							
Butter	7,217	75.6%	0.9%	5,388	5,440	10.5%	1.8%
Cheese	4,762	46.5%	1.9%	5,225	5,276	21.3%	3.0%
SMP	3,746	42.5%	0.9%	3,563	3,597	9.8%	-0.3%
WMP	4,878	49.6%	-0.2%	3,625	3,660	-2.2%	4.3%
OILSEEDS							
Soya beans	:	:	:	643 ⁽⁵⁾	649	15.6%	1.6%
Rapeseed	596 ⁽⁵⁾	-1.1%	-6.3%	:	:	:	:
SUGAR							
White sugar	484 ⁽⁴⁾	20.4%	2.3%	552 ⁽⁵⁾	558 ⁽⁵⁾	11.3%	1.1%
RICE (milled)							
Japonica	1,240	90.8%	0.0%	1,575	1,590	34.0%	2.1%
Indica	997	60.8%	-3.2%	419	423	10.8%	1.5%

Notes:

Changes in world prices are based on prices expressed in USD.

1) EU cereal quotations: soft wheat and barley (delivered Rouen), durum wheat (Port-La-Nouvelle/La Palice) and maize (Bordeaux).

2-3) US Soft Red Winter Wheat and US Hard Red Winter Wheat.

4) Figures for previous month.

5) Preliminary price.

6) World pork price is represented by US, as it is the biggest world exporter after the EU.

For any comments and questions please contact us at the e-mail address AGRI-A2@ec.europa.eu

FOOD PRICE INDICES – September 2022

European Union, Eurostat index, 2005=100

EU-27 consumer food prices, index 2005=100	Monthly average	Annual change	Monthly change
FOOD	160.5	15.8%	1.2%
Bread and cereals	164.2	17.6%	1.0%
Meat	157.4	15.4%	0.8%
Milk, cheese and eggs	163.4	21.7%	1.7%
Fats and oils	201.2	32.1%	0.7%
Sugar	139.4	11.7%	1.3%

FAO index, 2002-2004=100

FAO food prices, index 2002-2004=100	Monthly average	Annual change	Monthly change
FOOD	136.3	5.5%	-1.1%
Cereals	147.8	11.2%	1.5%
Meat	121.4	7.7%	-0.5%
Dairy	142.5	20.7%	-0.6%
Fats and oils	152.6	-9.5%	-6.6%
Sugar	109.7	-9.5%	-0.7%

World Bank index, 2010=100

World Bank commodity prices, index 2010=100	Monthly average	Annual change	Monthly change
FOOD	136.5	12.1%	0.1%
Oils and meals	129.3	2.4%	-3.8%
Grains	148.0	25.1%	6.9%
Other food	135.7	13.9%	-1.2%

AGRICULTURAL INPUT PRICES

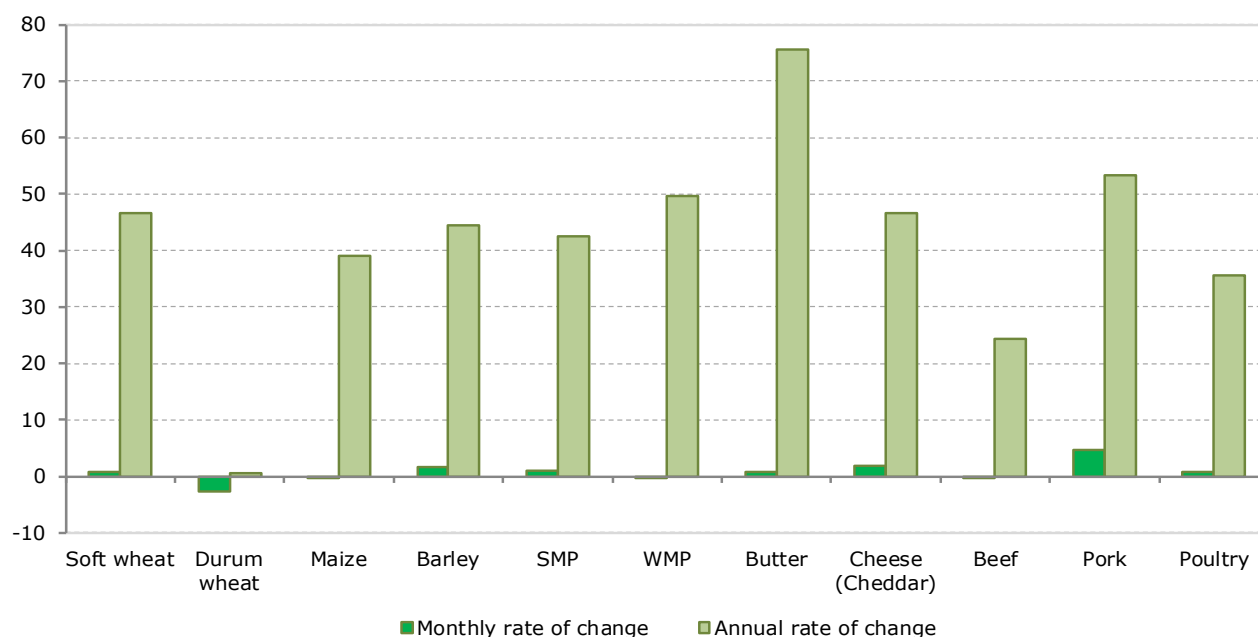
Agricultural input index 2010=100	Monthly average	Annual change	Monthly change
ENERGY	157.3	46.7%	-8.1%
Crude oil, Brent (USD/bbl)	90.2	20.9%	-8.6%
Crude oil, WTI (USD/bbl)	83.9	17.2%	-8.4%
Natural gas, Europe (USD/mmbtu)	59.1	158.8%	-15.6%
Natural gas, US (USD/mmbtu)	7.8	51.9%	-11.6%
FERTILIZERS	222.5	71.8%	6.0%
Phosphate rock (USD/mt)	320.0	116.9%	0.0%
Diammonium phosphate (USD/mt)	752.0	16.8%	0.3%
Potassium chloride (USD/mt)	562.5	154.5%	0.0%
Triple superphosphate (USD/mt)	708.0	23.4%	0.6%
Urea (USD/mt)	678.0	61.9%	14.7%

Please refer to Annex 1 and 2 for detailed data and graphs on EU price developments (for agricultural commodities and food) and commodity world quotations, as well as a description of the data used and their sources.

Annex 1

Agricultural commodity prices

**Chart 1. Monthly and annual changes in agricultural commodity prices in EU-27
(%, September 2022 compared to August 2022 and to September 2021)**



**Table 1. Monthly changes in agricultural commodity prices in EU-27
(%, September 2022 compared to August 2022)**

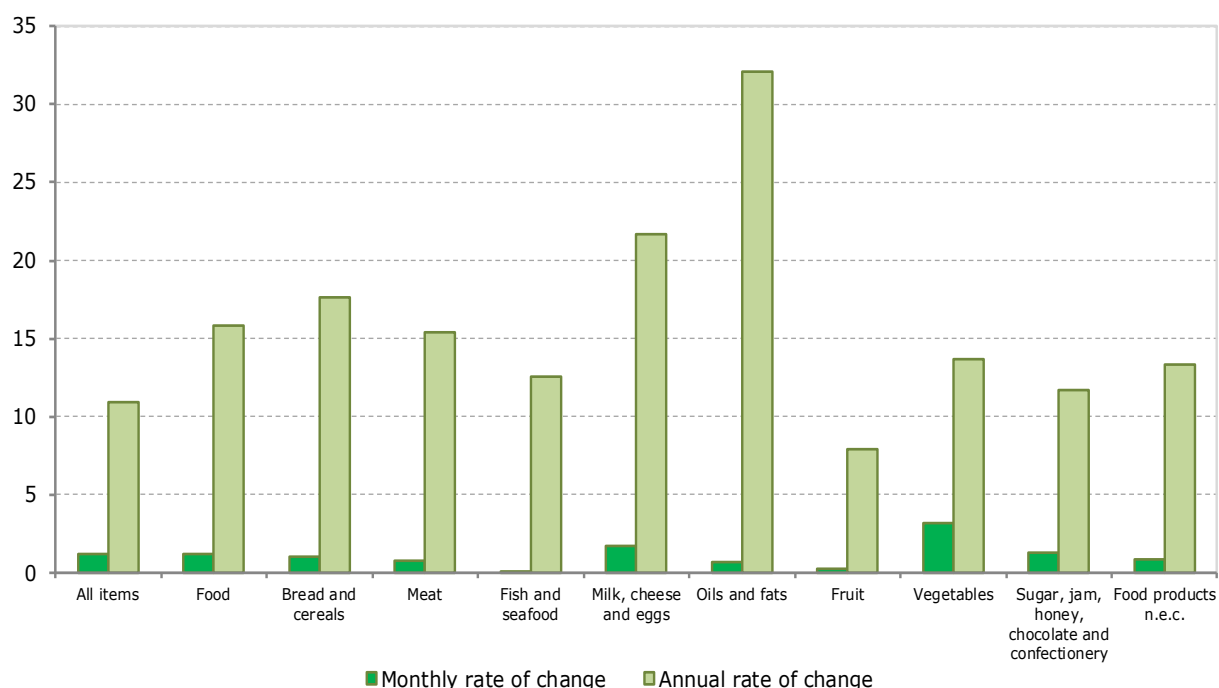
	Soft wheat	Durum wheat	Maize	Barley	SMP	WMP	Butter	Cheese (Cheddar)	Beef	Pork	Poultry
EU 27	0.7	-2.8	-0.1	1.6	0.9	-0.2	0.9	1.9	-0.2	4.6	0.8
Belgium				3.1	1.2	3.7	1.0		-0.1	8.2	4.0
Bulgaria	-3.3		5.0	-5.6						5.2	3.0
Czechia	1.7				-1.8	-0.5	2.2		0.3	8.6	-0.6
Denmark			0.0	0.0					-3.7	4.3	
Germany	0.5		-3.5	-0.2	-0.8	-1.4	0.5		0.8	6.3	0.0
Estonia	7.8			2.7			8.0			3.7	
Ireland				4.0	-2.1	0.4	1.6	2.9	-1.8	2.4	0.0
Greece	-2.0	-5.6	-3.2	2.0					3.5	-0.1	6.6
Spain	3.7	-0.7	-1.2	2.9			1.3		0.9	1.1	2.5
France	-1.4		-3.6	0.4					0.3	3.9	0.0
Croatia	4.8		1.8	-2.6					-0.8	8.0	-2.2
Italy	1.1	-6.0	-4.4	1.3			1.3		2.9		0.4
Cyprus			-1.7	-0.8						3.2	-0.3
Latvia	0.4			2.4						9.6	
Lithuania	0.3			1.6						8.5	1.8
Luxembourg										8.1	
Hungary	-1.6		5.7	-3.1						7.9	-1.7
Malta									-3.5	0.1	2.1
Netherlands			-4.4	0.0	2.6	0.4	1.1		-13.4	4.2	0.0
Austria	-1.2		2.5	1.2					2.7	4.4	2.2
Poland	-1.8		-0.9	2.4	-2.3	-0.1	0.2		-3.8	5.4	0.2
Portugal	0.8	0.0	-0.2	-1.4					0.6	1.2	-1.1
Romania	-3.5		-2.3	-3.6					1.0	5.2	1.3
Slovenia	2.6		4.2						1.5	4.9	-0.1
Slovakia	4.4			2.6			3.0		0.4	8.1	-1.6
Finland	0.2			-8.2					1.1	2.3	0.0
Sweden	2.3								-1.7	-2.0	-2.1

**Table 2. Annual changes in agricultural commodity prices in EU-27
(%, September 2022 compared to September 2021)**

	Soft wheat	Durum wheat	Maize	Barley	SMP	WMP	Butter	Cheese (Cheddar)	Beef	Pork	Poultry
EU 27	46.7	0.5	39.1	44.4	42.5	49.6	75.6	46.5	24.4	53.4	35.6
Belgium				17.7	41.6	48.2	68.6		35.5	64.4	37.8
Bulgaria	47.1		41.4	62.4						21.0	43.1
Czechia	61.3				51.5	53.0	41.3		26.2	55.7	37.6
Denmark									39.0	36.7	
Germany	44.4		23.3	41.6	39.6	49.1	66.7		21.3	62.7	28.7
Estonia	54.2			48.2			51.5			30.5	
Ireland				43.7	47.9	54.9	94.4	66.5	14.8	33.4	14.8
Greece	51.0	5.7	41.7	43.3						44.7	41.6
Spain	45.0	-2.8	30.7	44.8			69.2		29.5	43.5	62.8
France	31.6	-3.3	41.1	30.2					29.2	47.6	27.7
Croatia	59.8		38.1	64.3					29.4	49.8	37.0
Italy	43.6	-0.4	37.7	39.6			72.3		34.4		23.9
Cyprus			36.3	40.3						21.0	11.9
Latvia	45.2			36.6					52.6	63.9	
Lithuania	52.0			43.8					36.7	57.8	38.9
Luxembourg										59.9	
Hungary	52.6		53.8	46.6						61.3	41.6
Malta											32.1
Netherlands			34.1	37.2	36.6	43.3	71.2		16.5	55.2	0.0
Austria	38.5		43.4	48.0					18.1	42.5	25.4
Poland	45.3		31.3	44.1	49.1	58.3	62.5		27.0	70.7	63.3
Portugal	72.4	82.5	28.0	35.1					19.8	52.1	61.4
Romania	58.7		48.9	51.8					28.4	38.9	33.7
Slovenia	53.0		32.2						25.5	36.6	23.6
Slovakia	69.4			65.7			52.0		35.4	53.9	32.6
Finland	41.4			20.8					29.0	39.0	11.4
Sweden	40.5								10.6	17.0	24.3

Food consumer prices

**Chart 2. Monthly and annual changes in food consumer prices in EU-27
(%, September 2022 compared to August 2022 and to September 2021)**



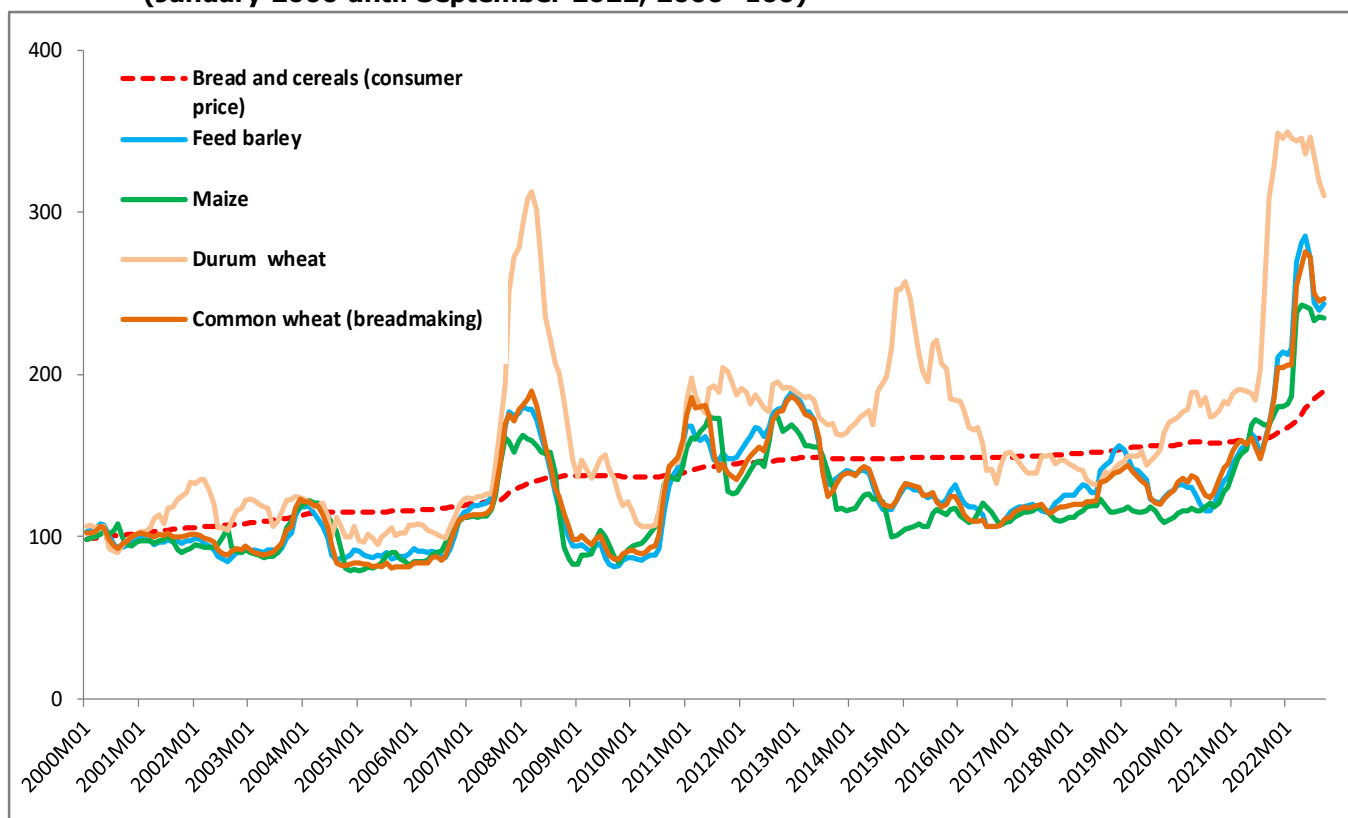
**Table 3. Monthly changes in food consumer prices in EU-27
(%, September 2022 compared to August 2022)**

	All items	Food	Bread and cereals	Meat	Fish and seafood	Milk, cheese and eggs	Oils and fats	Fruit	Vegetables	Sugar, jam, honey, chocolate and confectionery	Food products n.e.c.
European Union 27	1.2	1.2	1.0	0.8	0.1	1.7	0.7	0.3	3.2	1.3	0.9
Belgium	1.3	0.6	0.7	0.0	-0.9	1.5	1.8	1.0	1.7	0.6	-0.5
Bulgaria	0.7	2.0	1.1	2.1	0.0	3.2	-0.5	3.8	5.1	2.3	-0.1
Czechia	0.9	0.1	1.2	-0.1	-0.2	-0.1	1.0	-2.1	0.3	0.4	1.5
Denmark	1.5	-0.6	-0.2	-0.6	-2.5	0.6	-7.7	-1.3	-1.7	1.7	-0.8
Germany	2.2	1.7	1.6	0.9	2.2	2.0	1.2	1.4	3.5	1.9	1.3
Estonia	0.3	1.8	2.0	2.2	0.5	3.4	3.2	0.6	-4.7	6.2	3.1
Ireland	0.0	0.6	0.4	0.5	0.8	0.5	0.9	1.6	1.0	0.2	0.8
Greece	3.0	1.3	1.4	0.7	2.0	2.6	1.5	-2.8	4.3	-0.7	0.9
Spain	-0.2	0.5	0.3	0.6	-0.2	1.2	-0.2	-1.0	2.4	0.3	0.0
France	-0.5	1.3	0.6	0.5	-0.4	1.2	1.3	0.7	6.2	0.5	0.9
Croatia	0.3	-0.3	0.6	-0.7	1.5	-3.4	-8.6	3.6	3.3	-0.6	0.6
Italy	1.6	1.3	0.5	0.6	0.2	1.5	0.2	-0.7	5.5	1.2	0.0
Cyprus	-1.0	1.1	0.6	1.6	1.3	3.0	1.6	-4.0	2.8	-0.3	1.1
Latvia	1.5	1.9	2.4	2.9	1.1	3.3	4.4	1.0	-5.4	1.9	2.7
Lithuania	2.9	3.0	0.9	1.8	2.1	0.9	3.1	3.7	15.5	1.9	1.5
Luxembourg	0.5	0.6	0.0	0.3	-0.3	0.9	1.6	-1.8	6.1	-0.4	-0.1
Hungary	1.8	3.8	4.0	2.3	2.5	6.5	3.5	3.1	5.1	0.3	3.5
Malta	-0.6	1.3	1.3	0.7	-1.6	0.8	0.8	-0.1	5.7	0.9	2.3
Netherlands	2.8	-0.6	-0.5	-0.5	-1.9	0.9	-1.2	0.3	-1.6	0.8	-2.9
Austria	2.4	0.8	0.4	0.7	-1.8	0.8	0.4	2.1	0.6	2.9	0.3
Poland	1.5	1.7	1.3	2.6	1.2	1.6	1.7	0.7	1.4	1.3	1.9
Portugal	1.3	0.6	0.3	0.3	0.2	1.5	-1.2	0.2	3.0	1.3	1.2
Romania	0.9	1.8	1.8	1.1	1.5	3.0	1.3	0.9	1.2	5.8	1.7
Slovenia	-0.3	1.3	1.1	0.6	-0.9	1.7	1.8	2.3	1.8	1.4	1.0
Slovakia	0.9	2.1	2.0	3.0	1.2	2.8	1.4	0.9	0.2	1.6	2.2
Finland	0.7	2.3	4.1	4.7	-4.2	2.7	4.6	-1.8	1.8	3.0	1.7
Sweden	1.2	1.0	2.6	-0.3	-1.2	1.3	2.3	1.3	-0.3	0.3	3.8

**Table 4. Annual changes in food consumer prices in EU-27
(%, September 2022 compared to September 2021)**

	All items	Food	Bread and cereals	Meat	Fish and seafood	Milk, cheese and eggs	Oils and fats	Fruit	Vegetables	Sugar, jam, honey, chocolate and confectionery	Food products n.e.c.
European Union 27	10.9	15.8	17.6	15.4	12.6	21.7	32.1	7.9	13.7	11.7	13.3
Belgium	12.1	11.4	14.2	10.7	11.3	15.3	24.9	5.4	7.5	8.9	9.5
Bulgaria	15.6	26.0	27.6	25.5	16.5	34.3	42.2	11.8	16.6	28.9	25.0
Czechia	17.8	22.1	25.7	23.6	11.4	26.0	48.4	3.1	11.9	17.8	20.8
Denmark	11.1	15.9	14.7	18.7	13.5	24.6	37.0	6.4	10.6	9.8	10.6
Germany	10.9	18.4	18.4	19.5	16.5	28.8	48.6	6.3	14.3	8.9	14.4
Estonia	24.1	25.5	27.3	24.6	34.9	33.7	38.4	7.6	14.7	24.3	34.6
Ireland	8.6	10.2	12.2	12.6	7.4	16.0	18.9	5.5	4.7	5.8	8.8
Greece	12.1	13.1	18.5	17.4	4.1	23.3	17.2	-3.1	8.4	6.2	12.6
Spain	9.0	14.7	19.1	12.0	11.0	20.1	23.8	11.6	16.3	8.5	15.4
France	6.2	10.8	9.9	11.0	12.4	12.5	26.1	6.5	12.9	6.7	8.4
Croatia	12.6	19.4	26.1	19.2	19.0	25.7	15.8	8.2	13.3	15.2	18.1
Italy	9.4	12.0	14.3	9.5	9.7	13.7	21.5	7.7	14.2	10.1	9.2
Cyprus	9.0	8.9	14.1	15.3	12.0	11.2	27.1	-9.1	-0.2	6.4	8.8
Latvia	22.0	27.9	35.3	22.6	23.7	37.2	41.3	14.5	8.7	29.3	28.8
Lithuania	22.5	29.5	34.2	24.1	22.6	47.0	45.0	10.5	18.9	23.5	33.0
Luxembourg	8.8	9.2	10.0	11.6	7.3	11.0	19.6	-0.1	9.3	5.0	6.8
Hungary	20.7	39.0	55.0	30.0	29.4	58.9	36.7	19.9	28.0	21.6	36.6
Malta	7.4	12.6	15.5	15.7	3.9	16.3	22.9	6.7	5.6	8.9	10.9
Netherlands	17.1	12.8	10.1	16.6	11.7	20.3	31.9	5.6	9.4	9.1	7.2
Austria	10.9	13.6	13.3	15.3	12.8	20.3	29.8	3.9	11.0	8.6	9.3
Poland	15.7	18.9	22.2	22.9	20.1	23.4	40.1	11.9	8.9	19.6	13.5
Portugal	9.8	17.0	17.3	21.7	13.1	16.5	28.2	8.4	23.9	7.7	14.2
Romania	13.4	20.2	25.8	15.1	18.8	22.9	42.6	11.1	21.9	22.5	14.0
Slovenia	10.6	14.8	16.8	14.2	8.7	18.1	36.3	12.9	11.1	7.3	12.6
Slovakia	13.6	24.1	27.1	25.1	13.7	26.4	58.4	11.6	14.3	17.2	23.1
Finland	8.4	14.7	16.3	22.0	18.7	18.8	22.3	5.3	9.2	12.3	8.7
Sweden	10.3	16.7	17.1	16.6	16.0	24.0	30.0	13.6	15.0	8.9	15.3

**Chart 3. Cereals/bread and cereals based products: EU agricultural market and consumer price developments
(January 2000 until September 2022, 2000=100)**



**Chart 4. Cereals: international price developments
(January 2000 until September 2022, 2000=100, based on USD)**

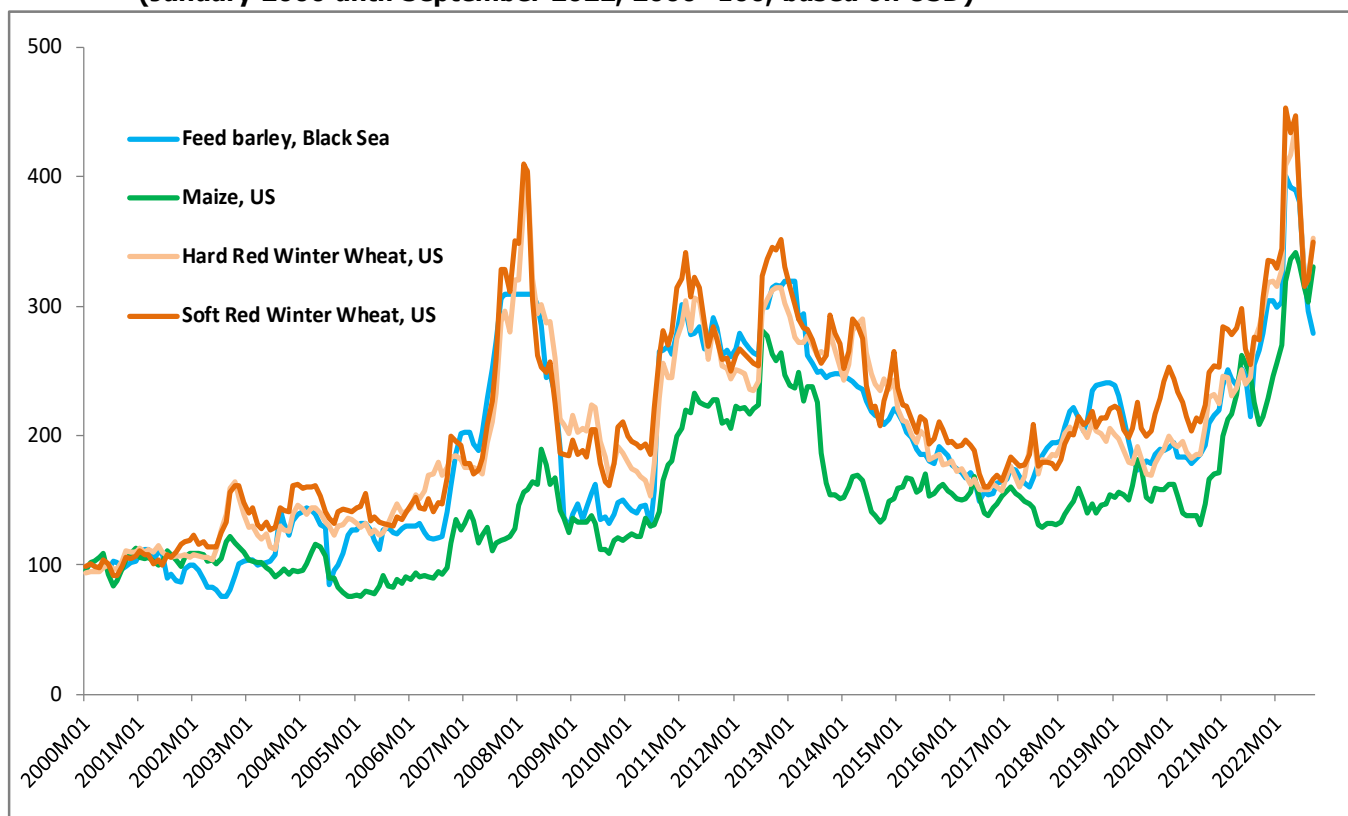


Chart 5. Meat: EU agricultural market and consumer price developments
(January 2000 until September 2022, 2000=100)

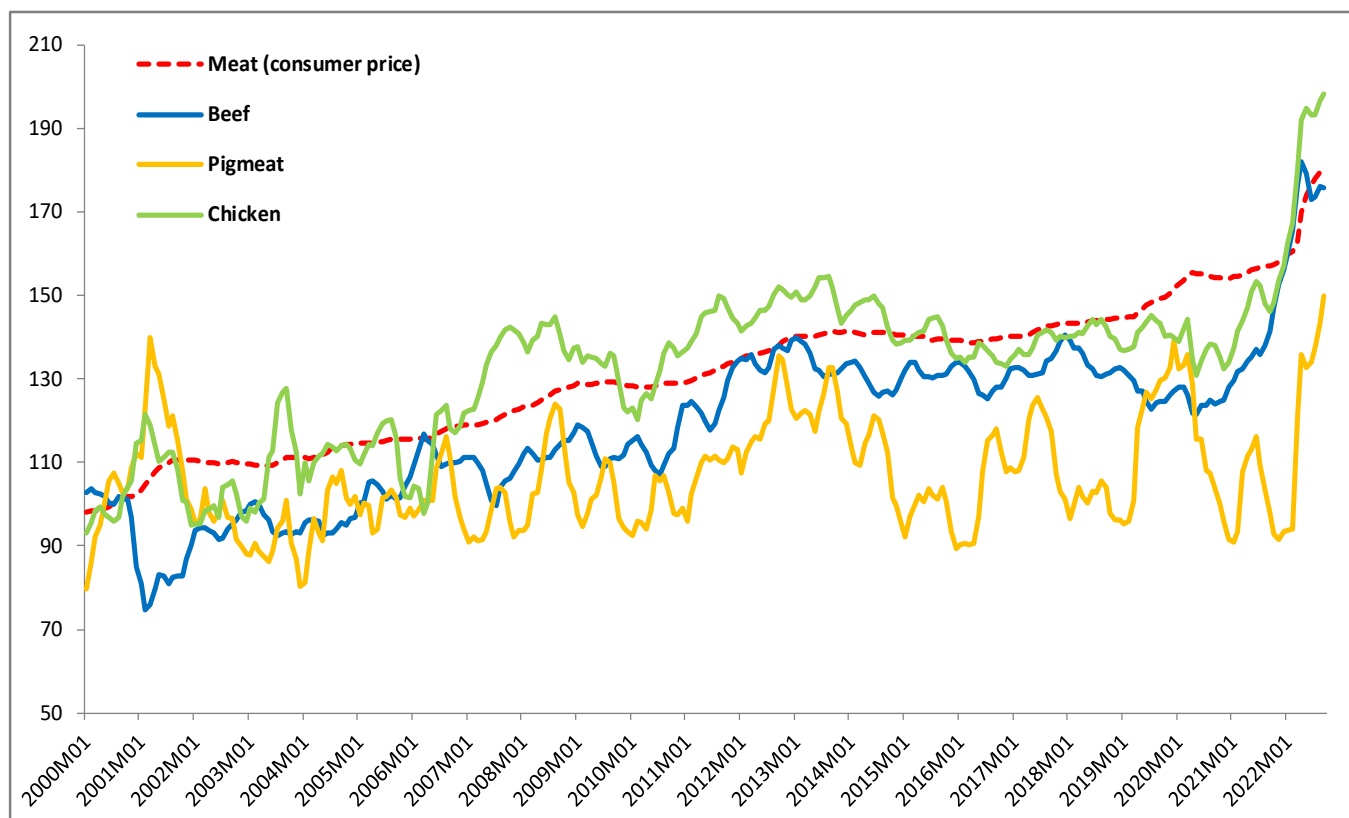


Chart 6. Meat: international price developments
(January 2000 until September 2022, 2000=100, based on USD)

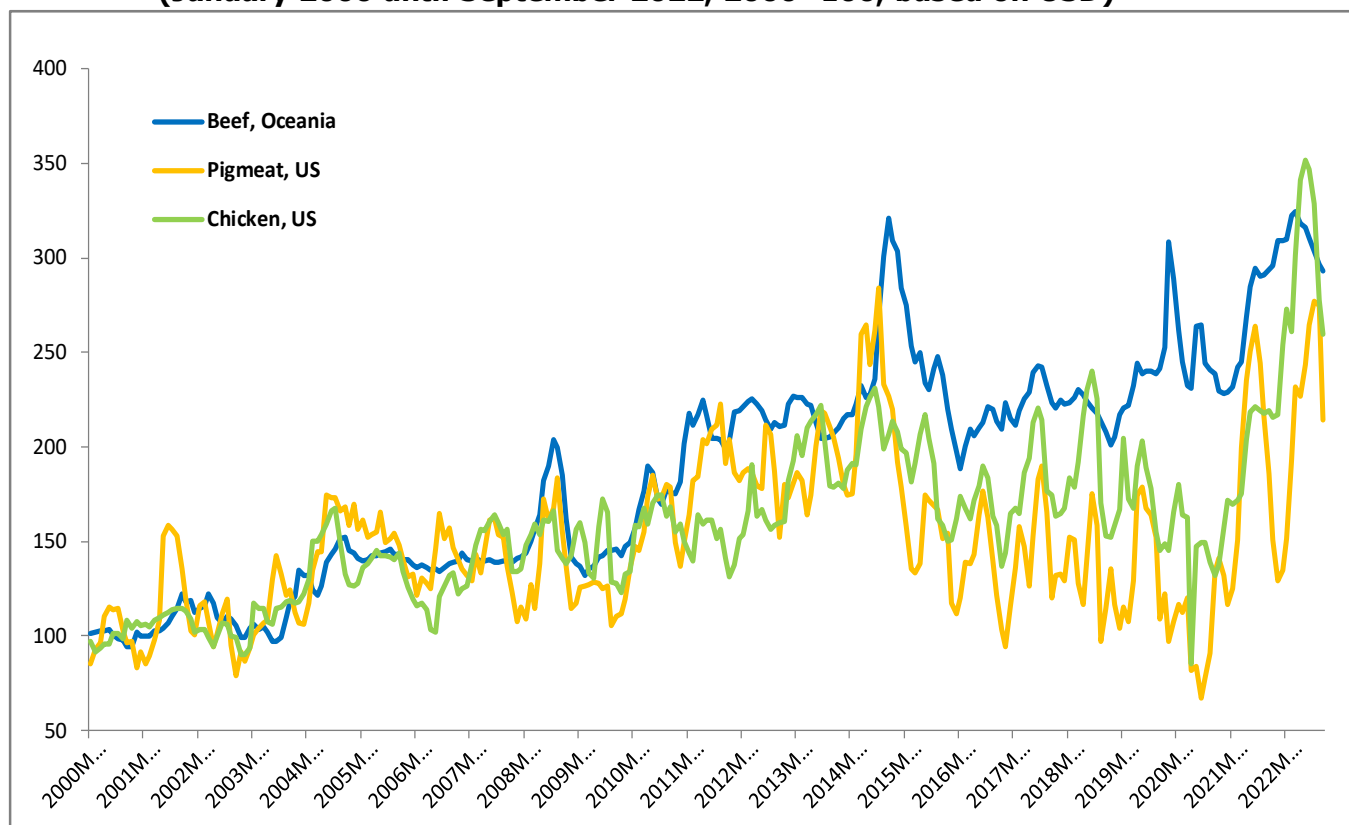


Chart 7. Dairy: EU agricultural market and consumer price developments
(January 2000 until September 2022, 2000=100)

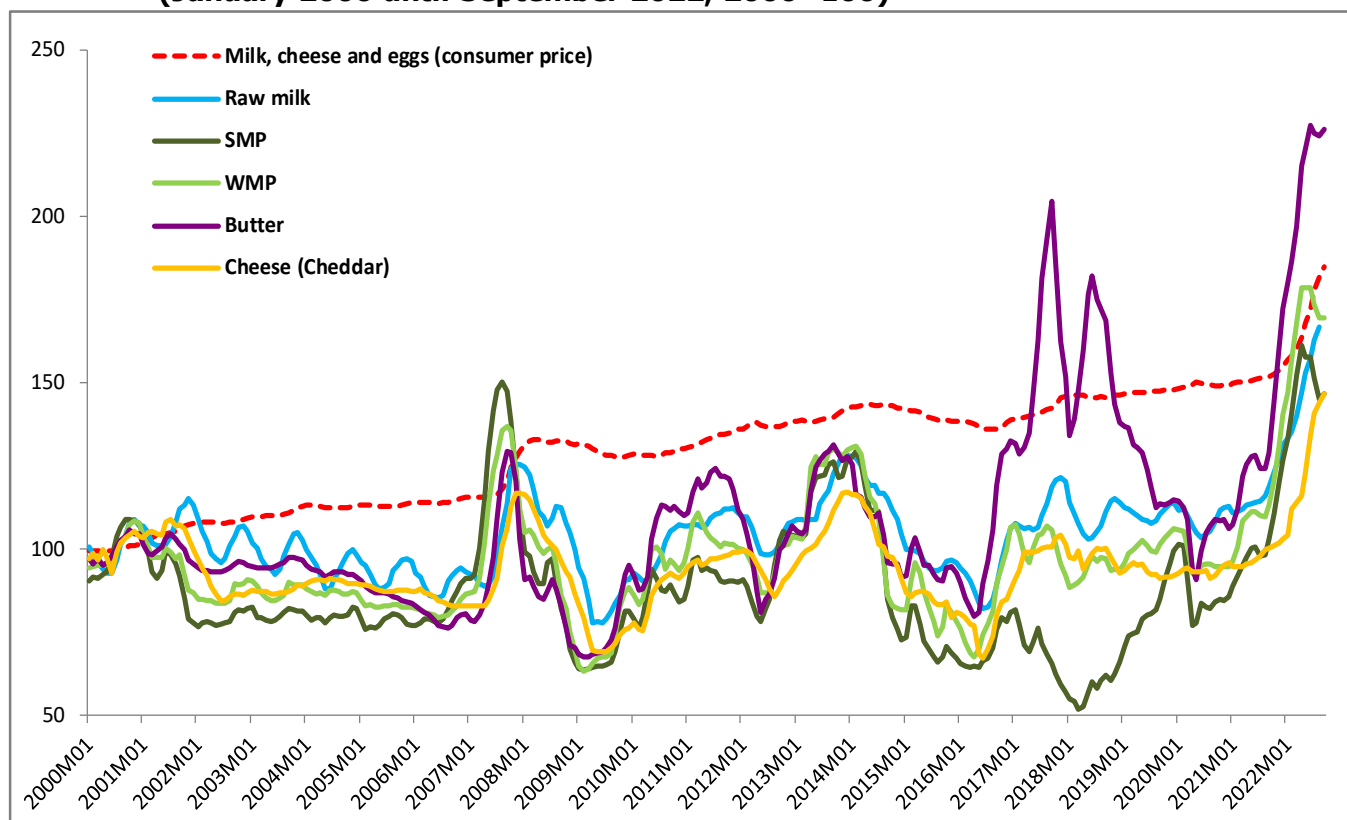
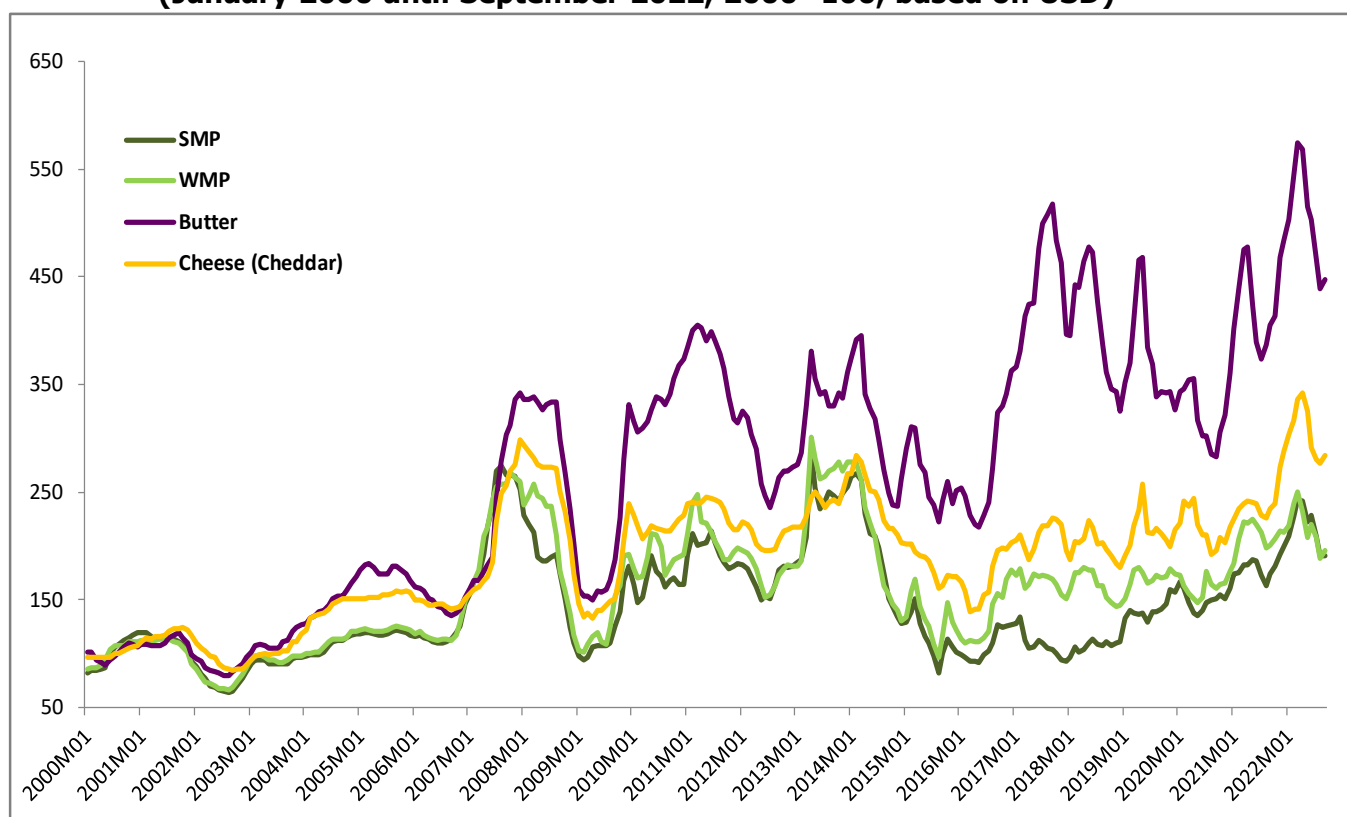


Chart 8. Dairy: international price developments (Oceania)
(January 2000 until September 2022, 2000=100, based on USD)



Annex 2

Description of the price series used

PRICES IN ABSOLUTE TERMS

European Union

Unless stated otherwise, all EU prices are averages for the current composition of 27 Member States, including prices before the date of the withdrawal of the UK from the EU.

A monthly average of absolute prices for plant, dairy and animal representative products (including their description) is published and available on the internet at: http://ec.europa.eu/agriculture/markets-and-prices/price-monitoring/monthly-prices/index_en.htm

As regards the cereal sector, representative market prices are used when comparing EU and World prices in page 1: Rouen (soft wheat and barley), Port-La-Nouvelle (durum wheat) and Bordeaux (maize).

EU pigmeat prices class E - change in definition following the implementation of the new single CMO regulation (as of 01.01.2014, more than 55% but less than 60% lean meat compared to 55% or more lean meat, until the before mentioned date) and a new class, S, became compulsory to cover pig carcasses with more than 60% lean meat.

Dairy - prices are based on MS notifications on the basis of which the EU weighted averages are calculated.

Rice - Japonica Italy and Indica Italy (DG Agriculture and Rural Development data based on EU Member States communications)

Sugar - white sugar (DG Agriculture and Rural Development based on EU sugar producers and refiners communications)

Rapeseed - CIF Hamburg, Europe "00" (USDA, OilWorld)

Sources: DG Agriculture and Rural Development (data communicated by EU Member States) and USDA Report on Oilseeds: World, markets and trade available at <https://apps.fas.usda.gov/psdonline/circulars/oilseeds.pdf>.

World

Wheat - US No.2, Hard Red Winter ord. Prot, US Fob Gulf (International Grain Council) and US No.2, Soft Red Winter Wheat, US Gulf (USDA)

Barley - Black Sea Feed fob (International Grain Council)

Maize - US no 2 Yellow Corn, export price fob Gulf (USDA)

Soya beans (US), c.i.f. Rotterdam (USDA, OilWorld)

Beef meat - Meat, beef (Australia/New Zealand), chucks and cow forequarters, frozen boneless, 85% chemical lean, c.i.f. U.S. port (East Coast), ex-dock, beginning November 2002; previously cow forequarters (World Bank)

Poultry meat - DG Agriculture and Rural Development calculation based on USDA weekly quotations for fresh chicken grade A, Chicago

Pigmeat - DG Agriculture and Rural Development calculation based on USDA weekly quotations for US "National Negotiated Swine. Weighted Average Price, Negotiated Carcass"

Butter - Oceania, indicative export prices, f.o.b. (AHDB calculated average of mid-point of price ranges reported bi-weekly, Dairy Market News, USDA)

Cheddar Oceania, indicative export prices, f.o.b. (AHDB average of mid-point of price ranges reported bi-weekly, Dairy Market News, USDA)

SMP Oceania, indicative export prices, f.o.b. (AHDB average of mid-point of price ranges reported bi-weekly, Dairy Market News, USDA)

WMP Oceania, indicative export prices, f.o.b. (AHDB average of mid-point of price ranges reported bi-weekly, Dairy Market News, USDA)

Rice - Japonica US Medium California 4% and Indica Thai Milled 5% Broken ("Creed market report"), simple average of weekly quotations

Sugar - London white sugar 05, nearby (closing), average of daily quotations (London International Financial Futures and Options Exchange)

Sources for world prices: World Bank (Commodity Price Data, Pink Sheet), FAO, USDA, OilWorld

<https://www.fao.org/giews/food-prices>

<https://www.worldbank.org/en/research/commodity-markets>.

AGRICULTURAL INPUT PRICES

Energy - Crude oil, UK Brent 38` API and US, West Texas Intermediate (WTI) 40` API; Natural gas (Europe) average import border price and a spot price component, beginning April 2010 including UK and Natural Gas (U.S.), spot price at Henry Hub, Louisiana.

Fertilizers - Diammonium phosphate, spot, f.o.b. US Gulf, Phosphate rock, f.o.b. North Africa, Potassium chloride (muriate of potash), spot, f.o.b. Vancouver, TSP (triple superphosphate), spot, import US Gulf, Urea, (Ukraine), f.o.b. Black Sea.

Source for input prices: World Bank (Commodity Price Data, Pink Sheet)

<https://www.worldbank.org/en/research/commodity-markets>.

FOOD PRICE INDICES

1. EU consumer food price indices

The EU consumer food price index measures the change over time of the prices of consumer goods and services acquired by households. The food products included in this index are those purchased for consumption at home and include the following categories: "bread and cereals", "meat", "milk, cheese and eggs", "oils and fats", and "sugar, jam, honey, chocolate and confectionery".

A detailed description of its composition can be found on Eurostat website at:

https://ec.europa.eu/eurostat/cache/metadata/en/prc_hicp_esms.htm.

2. FAO food price index

The FAO Food Price Index is a measure of the monthly change in international prices of a basket of food commodities. It consists of the average of five commodity group price indices (representing 55 quotations), weighted with the average export shares of each of the groups for 2002-2004.

A detailed description of its composition can be found at:

<http://www.fao.org/worldfoodsituation/foodpricesindex/en/>

3. World Bank food price index

The World Bank calculates commodity price indices for low and middle income countries (2010=100, 2002-2004 export value weights). The food index includes fats and oils, grains and other food (meat, sugar, etc) items.

A detailed description of its composition can be found at:

<http://www.worldbank.org/en/research/commodity-markets>